

Plan of Cottage Lots of Henry Hubbard, 1936, Book 7, Page 49

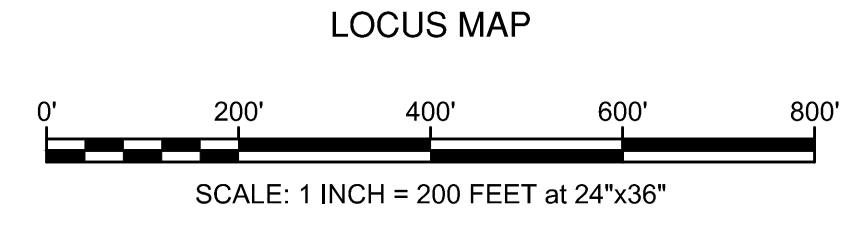
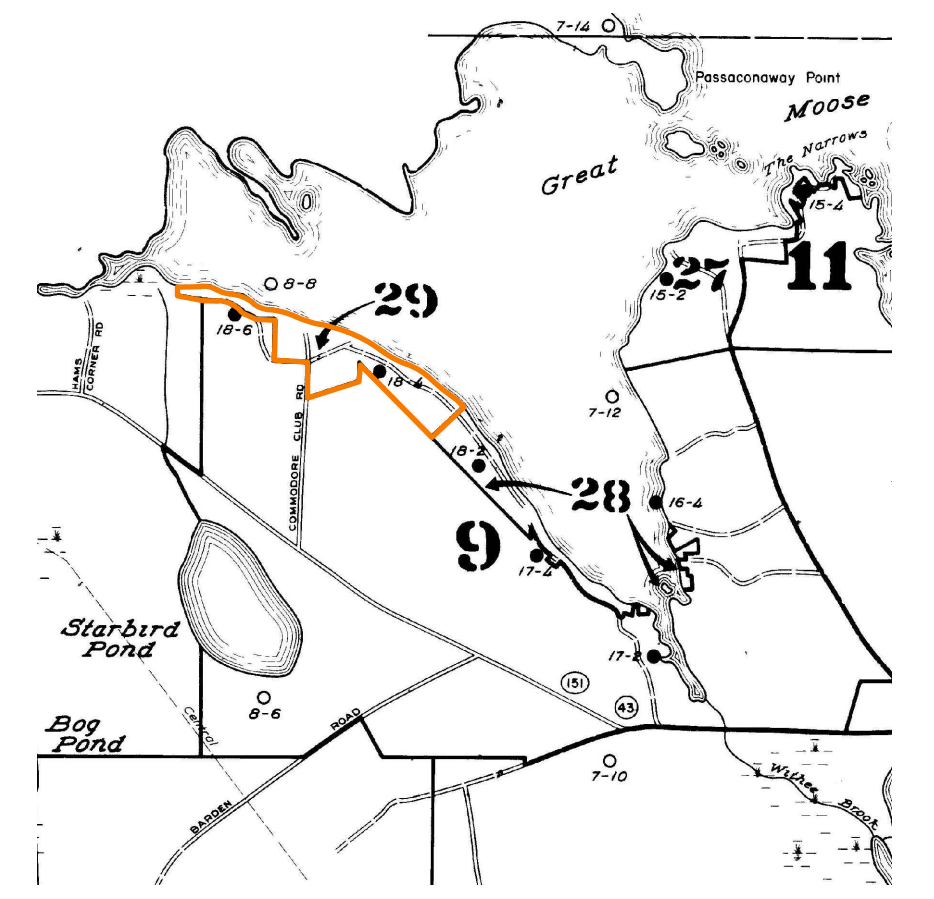
Plan of Lots of Evelena Cookson, 1948, Book 9, Page 23  
(R. Wing & T. Bryant Survey, 1990, Book B-90 Page 160)

**LEGEND**

- 23 Lot Number (If Underlined, based on Boundary Plan)
- 3 Lot Number in Recorded Subdivision
- 123' Distance Scaled from Map
- 123's Distance Scaled from Map
- = Opposite Distance on lot is Equal
- Combines Lot into an Account
- 6 Adjacent Map No.
- TG Tree Growth
- Match Line
- Map Boundary

Note: Maps are for assessment purposes only and are not to be used for conveyances.

1/4 Acre



PROPERTY MAP  
**TOWN OF HARTLAND**  
SOMERSET COUNTY, MAINE  
UPDATED BY R.J. BUTLER &  
HEART OF MAINE SURVEYING  
HARMONY, MAINE

AUG. 2022